



# Nantucket Public Schools Campus Planning

**NPS Campus Planning Committee**  
**September 2021**



# Campus Planning Improvements Presentation

September 2021

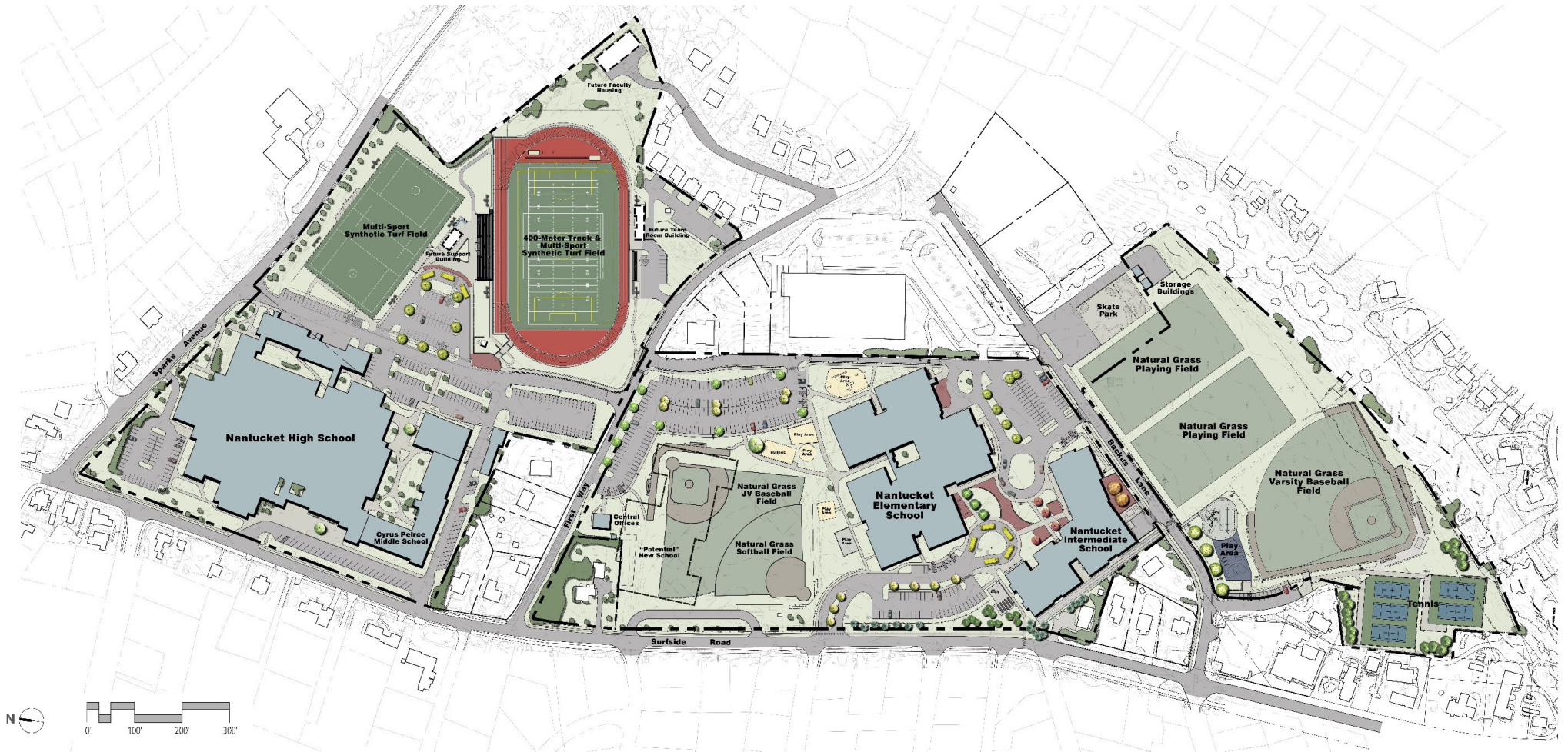
---

1. NPS Campus Planning History
2. The Need for Athletic Improvements
3. Description of Project Components
4. The Benefits of Athletic Improvements
5. Proposed Project Schedule
6. Proposed Project Costs

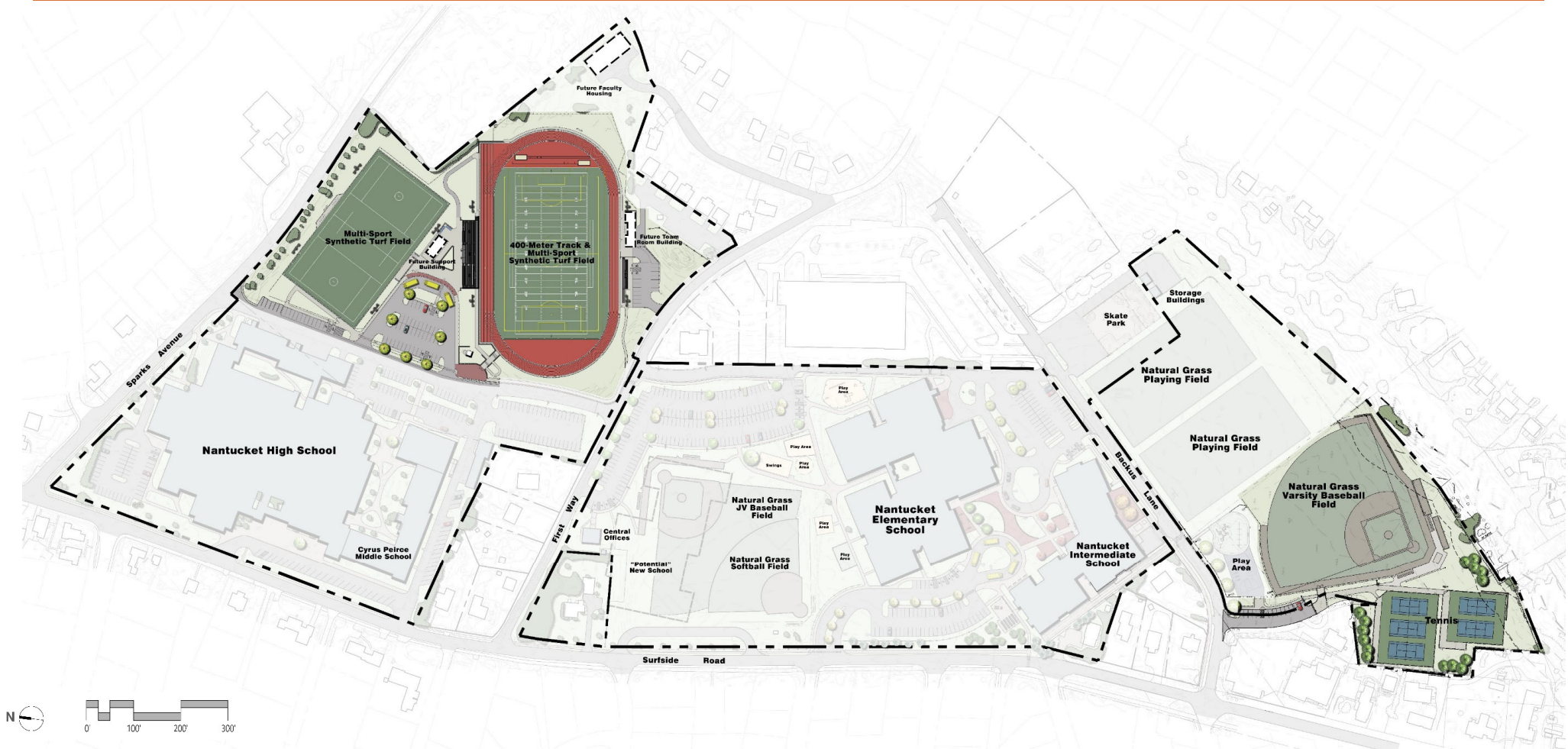




# Overall NPS Campus Master Plan



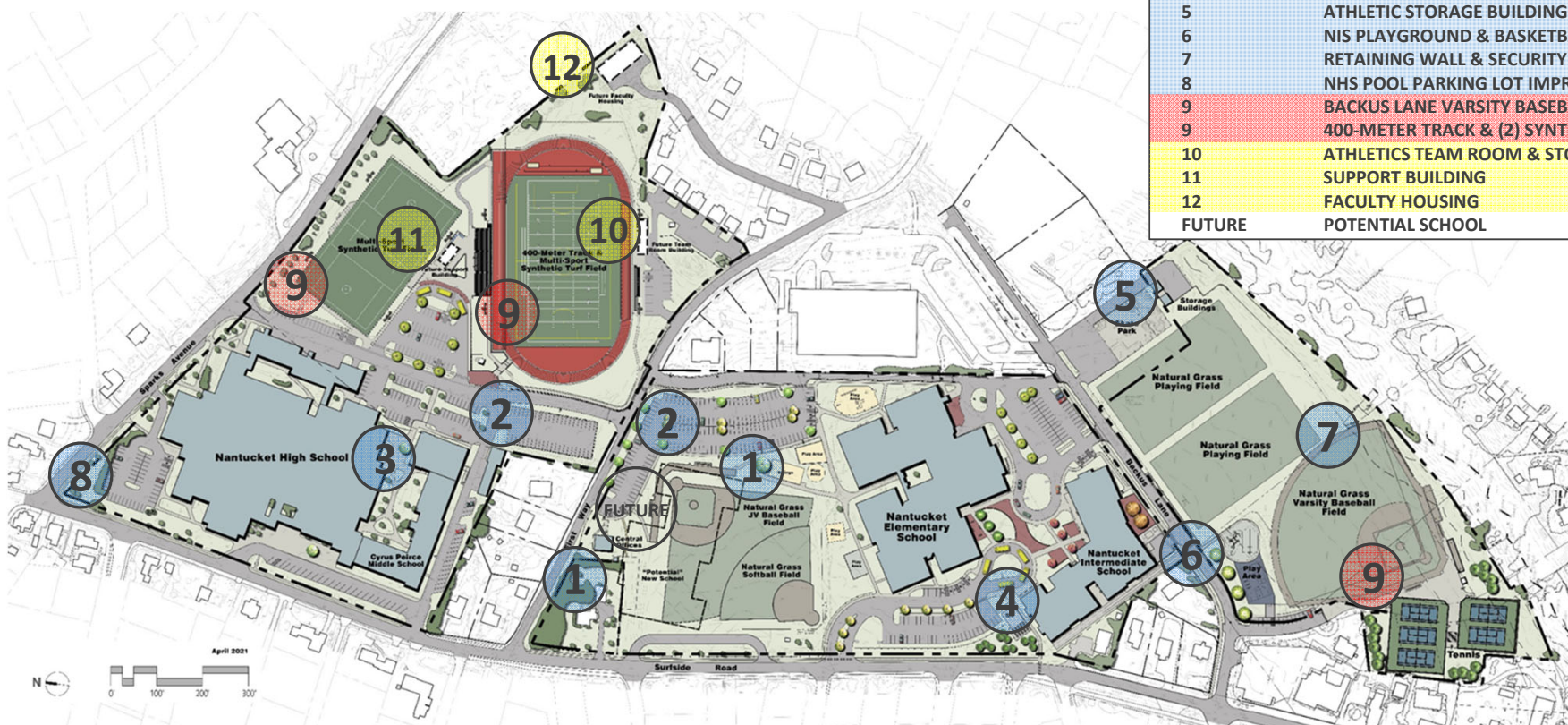
# Overall Campus Master Plan – Phase 9





# NPS Campus Master Plan Phasing History

PHASE #	PROJECT SCOPE
1	PLAY STRUCTURE, SWINGS, GARDEN RELOCATION
2	CENTRAL PARKING LOT, CROSS CAMPUS DRIVE
3	CYRUS PEIRCE MIDDLE SCHOOL ADDITION
4	NANTUCKET INTERMEDIATE SCHOOL (NIS)
5	ATHLETIC STORAGE BUILDING
6	NIS PLAYGROUND & BASKETBALL COURT
7	RETAINING WALL & SECURITY FENCING @ BACKUS FIELDS
8	NHS POOL PARKING LOT IMPROVEMENTS
9	BACKUS LANE VARSITY BASEBALL FIELD & TENNIS COURTS
9	400-METER TRACK & (2) SYNTHETIC FIELDS
10	ATHLETICS TEAM ROOM & STORAGE BUILDING
11	SUPPORT BUILDING
12	FACULTY HOUSING
FUTURE	POTENTIAL SCHOOL



# The Need for the Athletic Improvements

---

## OVERALL ATHLETIC PROGRAM NEEDS

- OVERALL NHS PARTICIPATION RATES ARE OVER 30%, SIGNIFICANTLY EXCEEDING STATE AVERAGE RATES.
- CURRENTLY NPS SPENDS OVER \$40,000 EVERY YEAR TO REPAIR /RE-SOD THE FOOTBALL AND SOCCER FIELDS, REQUIRING THE FIELDS TO REMAIN CLOSED ALL SUMMER.
- INCREASE IN PARTICIPATION IS PUTTING MORE AND MORE PRESSURE ON THE NATURAL GRASS FIELDS.



## PARKING & SUPPORT FACILITIES NEEDS

- CONTINUED NEED FOR MORE ON-CAMPUS PARKING.

## TRACK & GRANDSTAND NEEDS

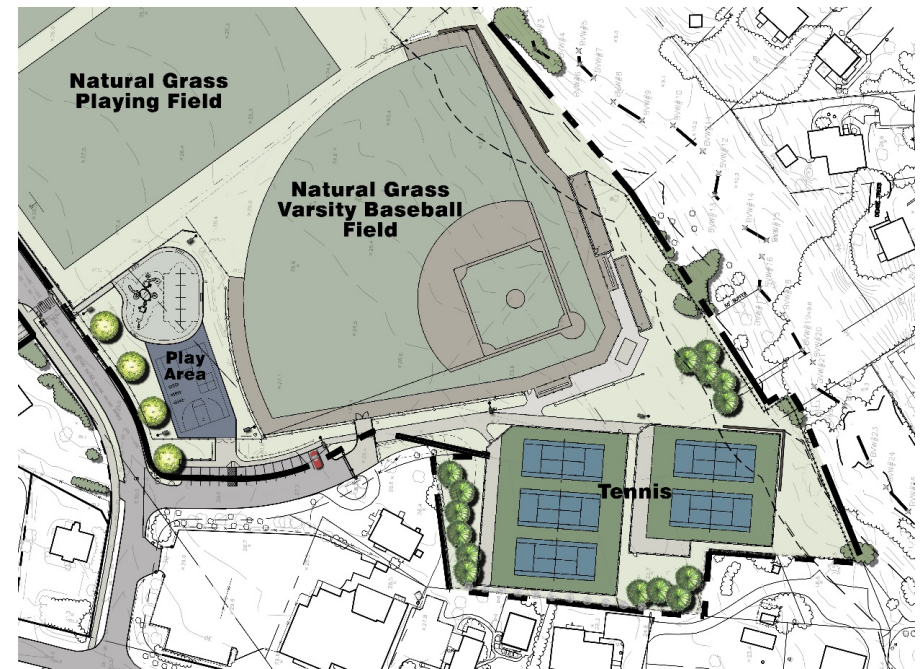
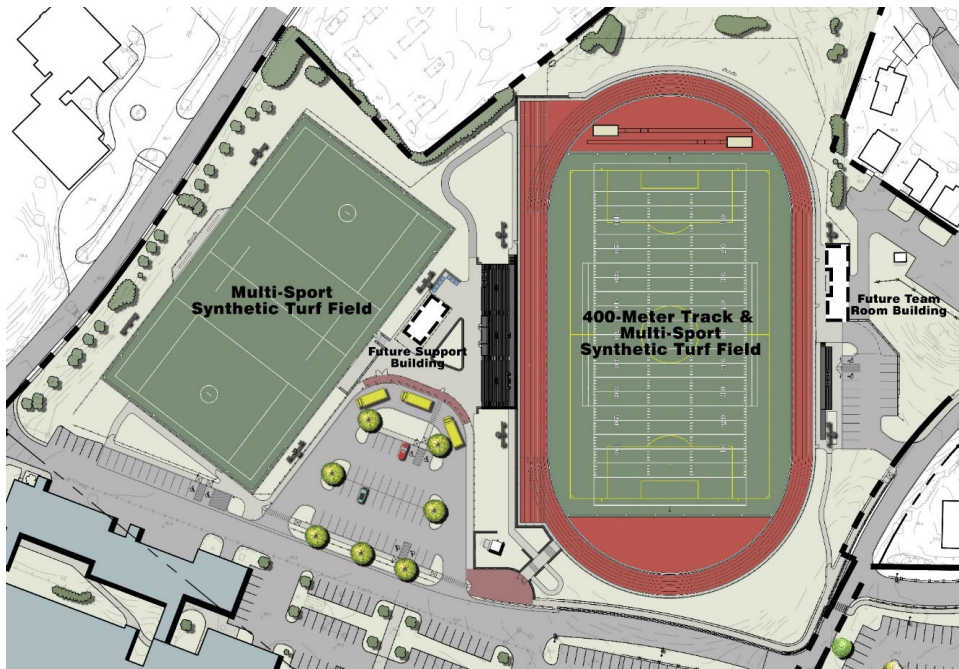
- NHS IS THE LAST REMAINING PUBLIC HIGH SCHOOL CINDER TRACK IN MASSACHUSETTS & IS NOT CODE COMPLIANT.
- THE EXISTING GRANDSTAND DOES NOT MEET CURRENT BUILDING & ACCESSIBILITY CODES (CMR 521, CHPT. 14).





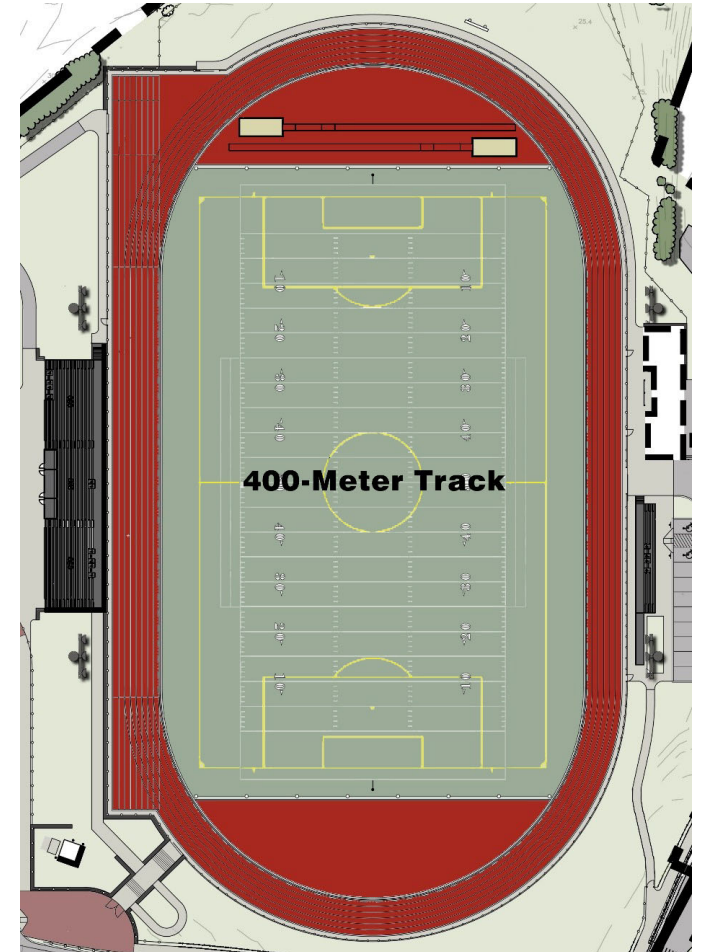
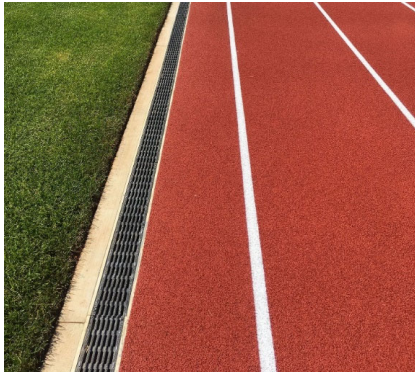
# Phase 9 Improvements

---



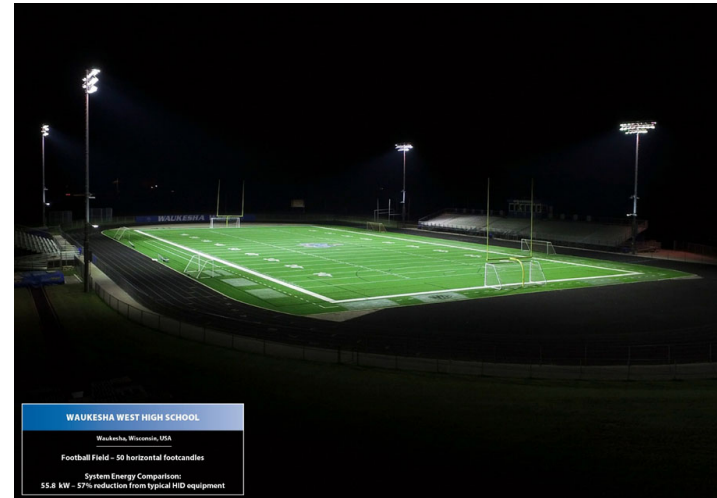
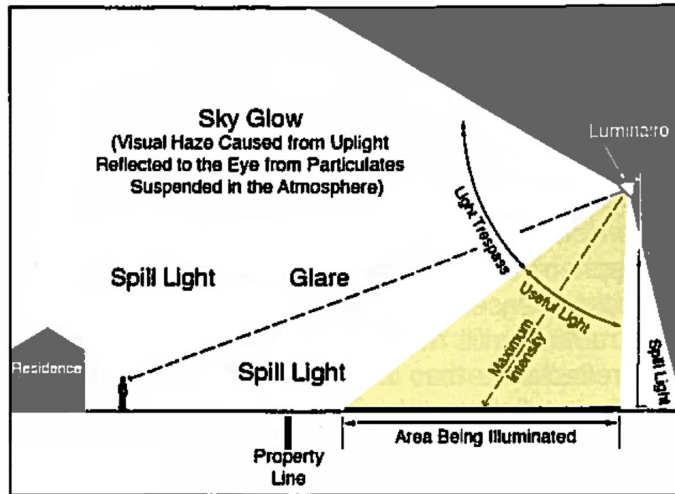
# Proposed Track and Field #1 Improvements

- 400 Meter, National Federation compliant track venue.
- 6 distance lanes/ 8 sprint lanes in north straightaway.
- Surfaced 'D zones' for jumping events.
- Playing dimensions: 210' x 360'.
- Dimensions support football, soccer, field hockey and lacrosse.
- Synthetic turf system with underlayment pad.
- LED Athletic Lighting upgrades to 30fc, including new poles, improved uniformity.

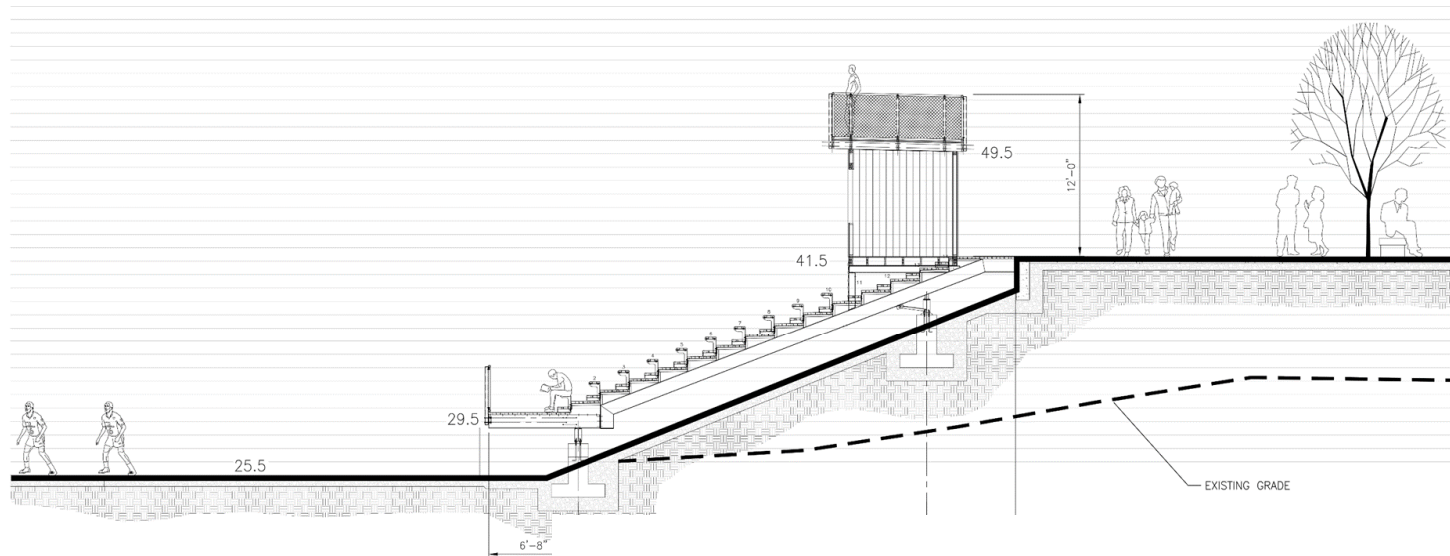




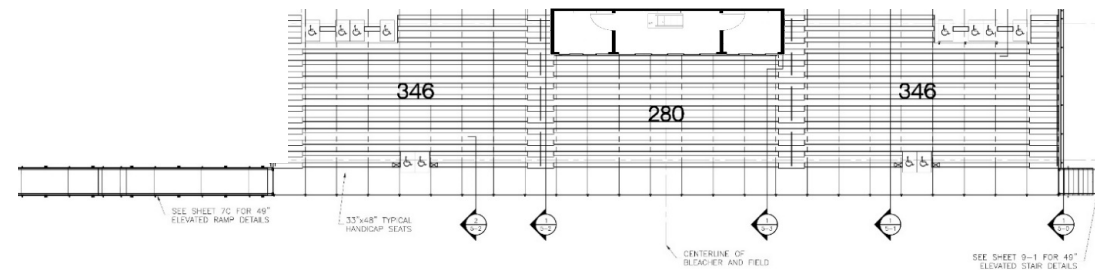
# Athletic Field Lighting Improvements



# Grandstand Seating & Press Box Improvements

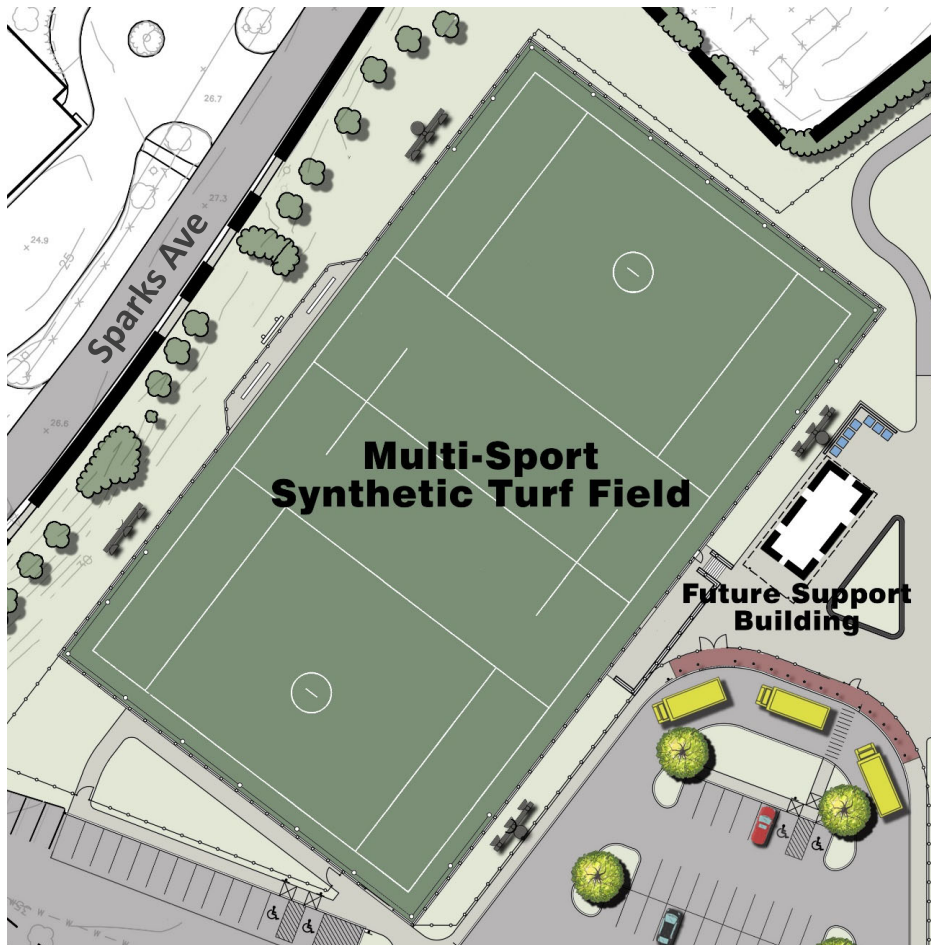


**TOTAL SEATING CAPACITY: 980 SEATS**  
**HANDICAP SEATING: 12 SEATS**  
**TOP AND BOTTOM LOADING CONFIGURATION AND ACCESSIBILITY WITH 4 AISLES**  
**8' x 42' PRESS BOX & FILMING PLATFORM**  
**ALUMINUM / GALVANIZED STEEL CONSTRUCTION**

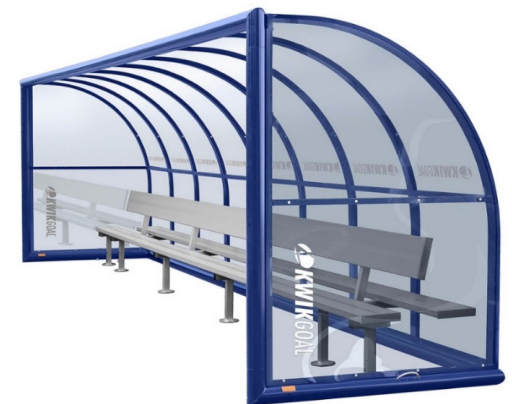




# Proposed Field #2 Improvements



- Playing dimensions: 210' x 330'.
- Dimensions primarily support field hockey and lacrosse play.
- Shorter pile synthetic turf system
- Permanent inlay markings and logo.
- Enclosed player benches on north side [Sparks Avenue] side of field.
- Spectator seating and sloped viewing areas on south side of field.



# Synthetic Turf System Improvements

---

## 1. PROPOSED TURF SYSTEM COMPONENTS – UPGRADED SYSTEM

- Woven Backing (similar to Greenfields product) with no urethane.
- Shock Attenuation Pad – Brock SP14 – Certified ‘cradle-to-cradle’.
- Organic Infill Material – Brock Fill – no SBR rubber.



## 2. PFAS COMPONENTS

- Manufacturer’s confirmation of no use of PFAS; Testing accuracy to ‘parts per trillion’.
- Testing per MA DEP (tests for 6 forms of PFAS) vs California (tests for 24 forms of PFAS).

## 3. SUSTAINABILITY / RECYCLING

- Bonded requirement to recycle entire turf system, including chain of custody.

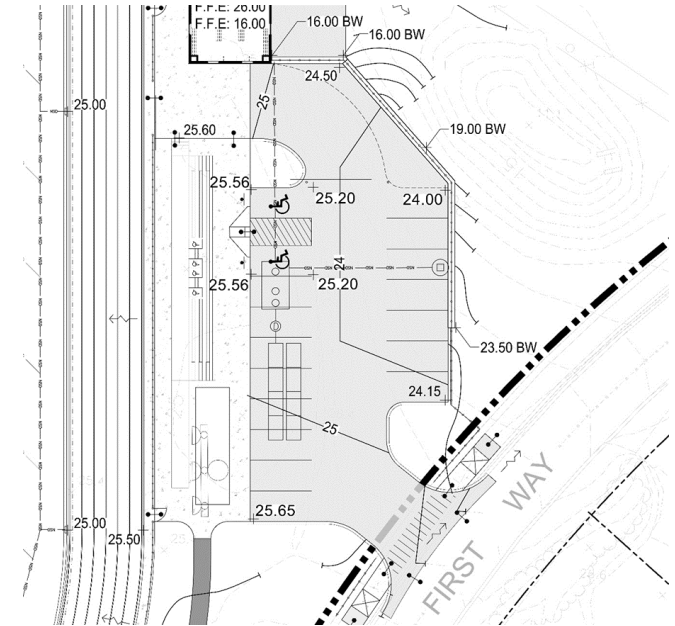
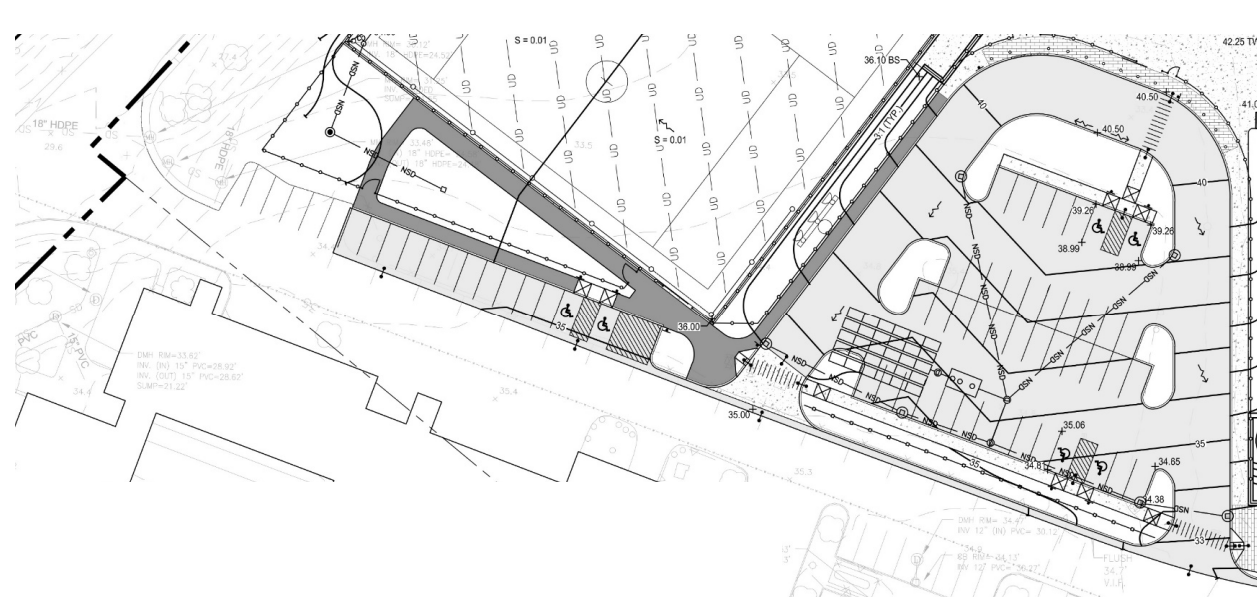
## 4. MAINTENANCE REQUIREMENTS, EQUIPMENT, & TRAINING

- Low maintenance, not no maintenance.





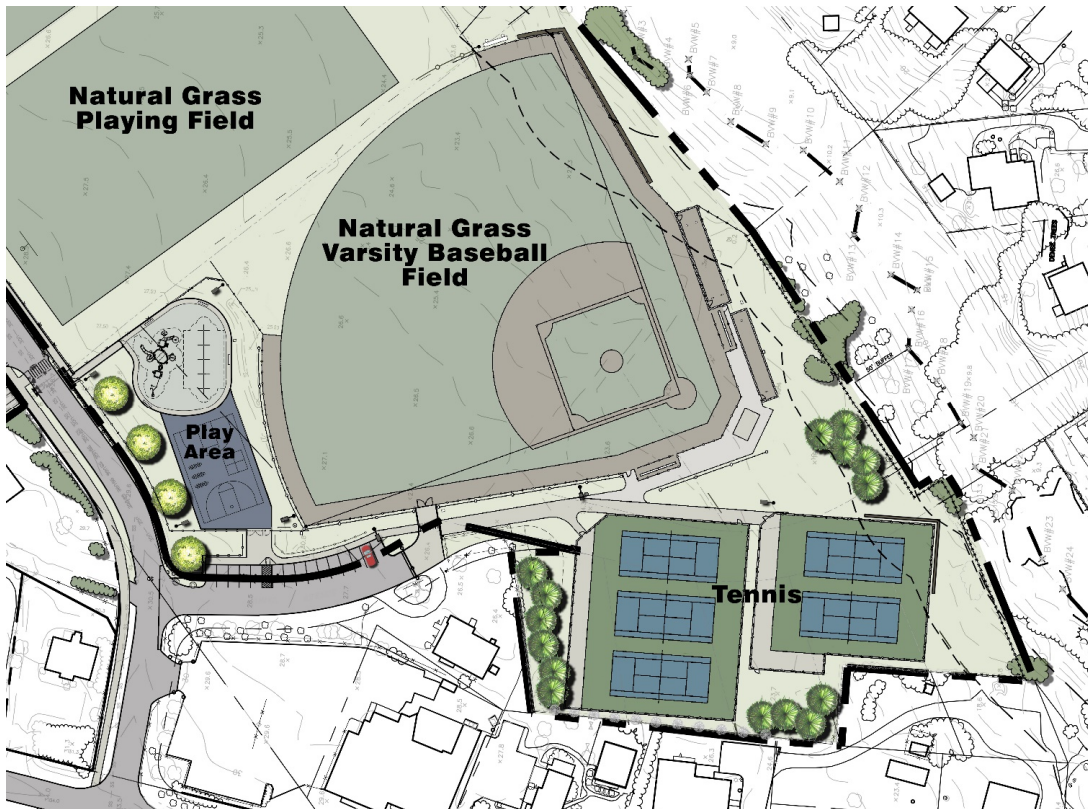
# Parking / Circulation Improvements



- **(62) total additional parking spaces provided, including (8) accessible spaces.**
- **Arrival and drop-off circulation pattern.**
- **Retaining walls surrounding existing wind turbine to remain undisturbed.**
- **Emergency access to Field One/Track**
- **Elimination of parallel parking spaces.**

# Backus Lane Baseball & Tennis Improvements

---



- Baseball playing dimensions: CF: 325'; RF/LF: 315'.
- Batting cage.
- Double bull-pen.
- Ball safety netting.
- (5) Post-Tensioned Concrete Tennis Courts.
- (15) space parking area.
- Site Security – lighting and cameras.



# The Benefits of the Athletic Improvements

---

- GROWTH OF STUDENT BODY HAS PLACED INCREASED DEMANDS ON EXISTING FIELD USAGE. SYNTHETIC TURF FIELDS PROVIDE UNLIMITED PLAYABILITY, INCREASING THE CAPACITY IN COMPARISON TO NATURAL GRASS FIELDS.
- SYNTHETIC TURF ALLOWS FOR EXTENDED PLAYING SEASONS AND LONGER CONDITIONING OPPORTUNITIES FOR STUDENT ATHLETES.
- CONSISTENT SYNTHETIC TURF PLAYING SURFACE RESULTS IN ENHANCED SAFETY FOR STUDENT ATHLETES.
- PROVIDING NANTUCKET PUBLIC SCHOOLS WITH A CODE COMPLIANT TRACK & GRANDSTAND VENUE.
- ATHLETIC ADMINISTRATION BENEFITS WITH REDUCED CANCELLATIONS DUE TO INCLEMENT WEATHER.
- SOCIAL AND EDUCATIONAL BENEFITS TO OUTDOOR PHYSICAL EDUCATION.



# Updated Overall Project Costs

---

400-Meter Track:	\$ 2,200,000
Field #1 w/ LED Lights:	\$ 2,900,000
Field #2:	\$ 2,300,000
Press Box & Grandstand:	\$ 1,000,000
Backus Baseball Field:	\$ 1,900,000
Backus Tennis Courts:	\$ 1,400,000
Parking & Utilities:	\$ 3,100,000
Soft Costs, Contingencies, Escalation:	\$ 2,700,000
<hr/>	
TOTAL:	\$ 17,500,000
Current Funding:	\$ 1,100,000
Requested ATM 2022 Funding:	\$ 16,400,000



# Project Schedule

---

- |  |                             |
|--|-----------------------------|
| • Preliminary Design and Estimating            | November 2020 – May 2021    |
| • Public Informational Campaign                | September 2021 – April 2022 |
| • Town Funding Request Meetings                | July – November 2021        |
| • Final Construction Documents and Engineering | September – December 2021   |
| • Project Bidding                              | January – February 2022     |
| • ATM 2022                                     | May 2, 2022                 |
| • Annual Town Election                         | May 10, 2022                |
| • Funding Availability                         | July 1, 2022                |
| • Construction Commences                       | July 2022 – Spring 2023     |
| • Availability:                                |                             |
| • Track Complex and Field One                  | Fall 2022                   |
| • Field Two                                    | late Fall, 2022             |
| • Backus Baseball                              | Spring, 2023                |
| • Tennis                                       | Spring, 2023                |

# Discussion

